

## LAND RANCHES EXCHANGES

This property consists of 20 acres of private, secluded openings with just the perfect mix of Redwoods, Firs and hardwoods.

Excellent neighborhood close in to the town of Willits

### 20 ACRES SPRING CREEK

This 20.36 acre parcel is located only 8 miles from downtown Willits, yet has ultimate privacy and seclusion. It is along about a mile of unpaved road from Sherwood Road. The land is at the end of a cul de sac with utmost privacy and seclusion. There is a well built greenhouse and also a shop storage building. The land has several nice clearings and excellent southern exposure. There is an excellent year round spring with water system in place and over 10,000 gallons of storage. You will not find a better place to plan your dream home. Please request a private showing of this fine property.

**ASKING PRICE \$295,000**



There is abundant wildlife in this area for your wonder and enjoyment.

**PONDEROSA AND SUN REALTY**  
Land, Ranches, Estates, Conservation Projects

635 S. Main St.  
Willits, CA 95490

tonysorace@pacific.net  
www.pondsun.com  
707-459-5108  
707-489-3763  
707-459-0540 fax

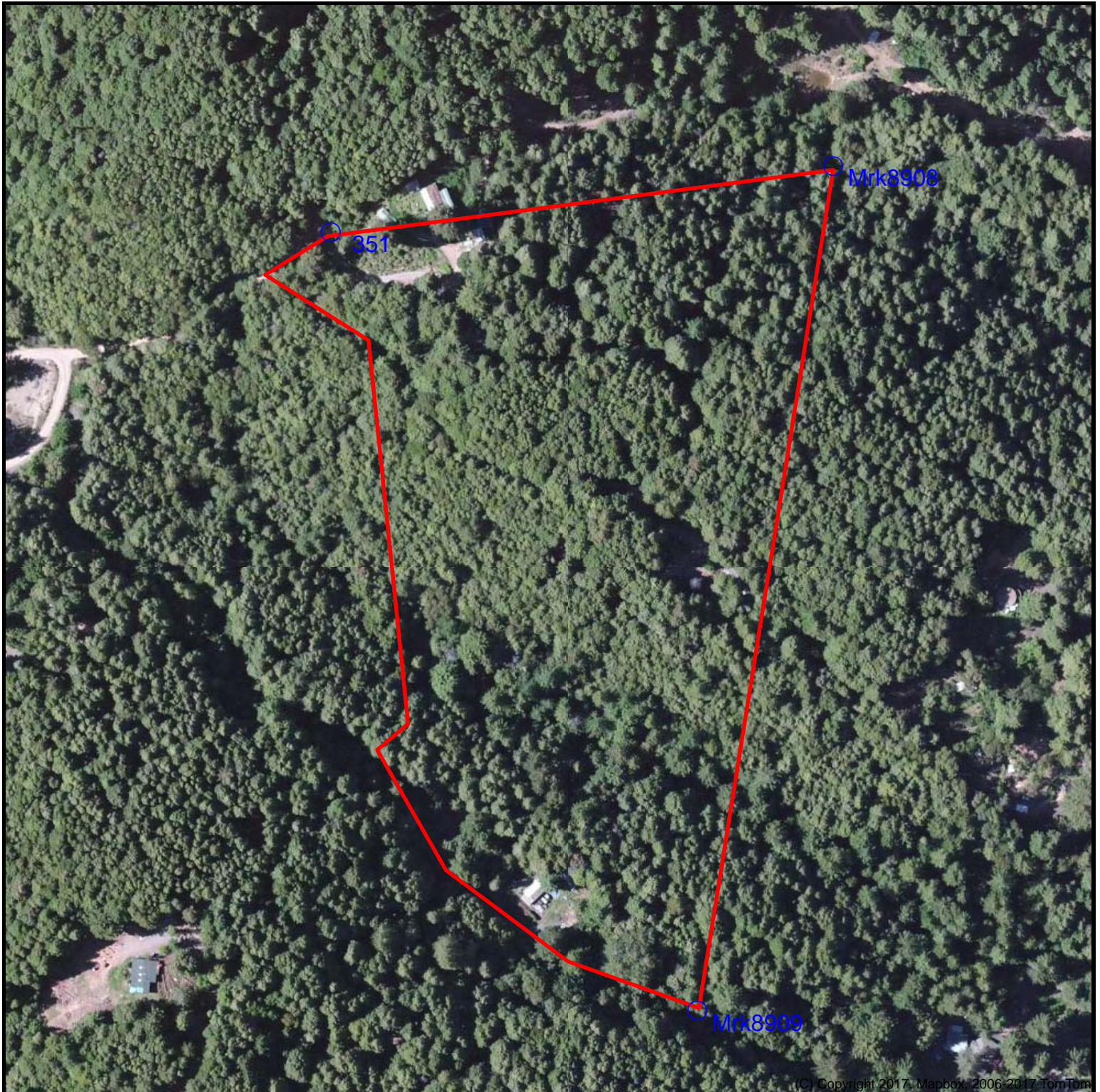
TONY SORACE DRE Lic. # 00672123  
Land and Ranch Broker Certified Financial Planner CFP





20.36 acres in IN MENDOCINO COUNTY  
Gorgeous Redwood Forest  
Openings with privacy and seclusion  
Great access and exposure  
TONY SORACE LAND AND RANCH BROKER  
\$295,000

Tony Sorace  
Land and Ranch Broker  
Office: 707-459-5108  
Cell: 707-489-3763  
tonysorace@pacific.net  
www.pondsun.com



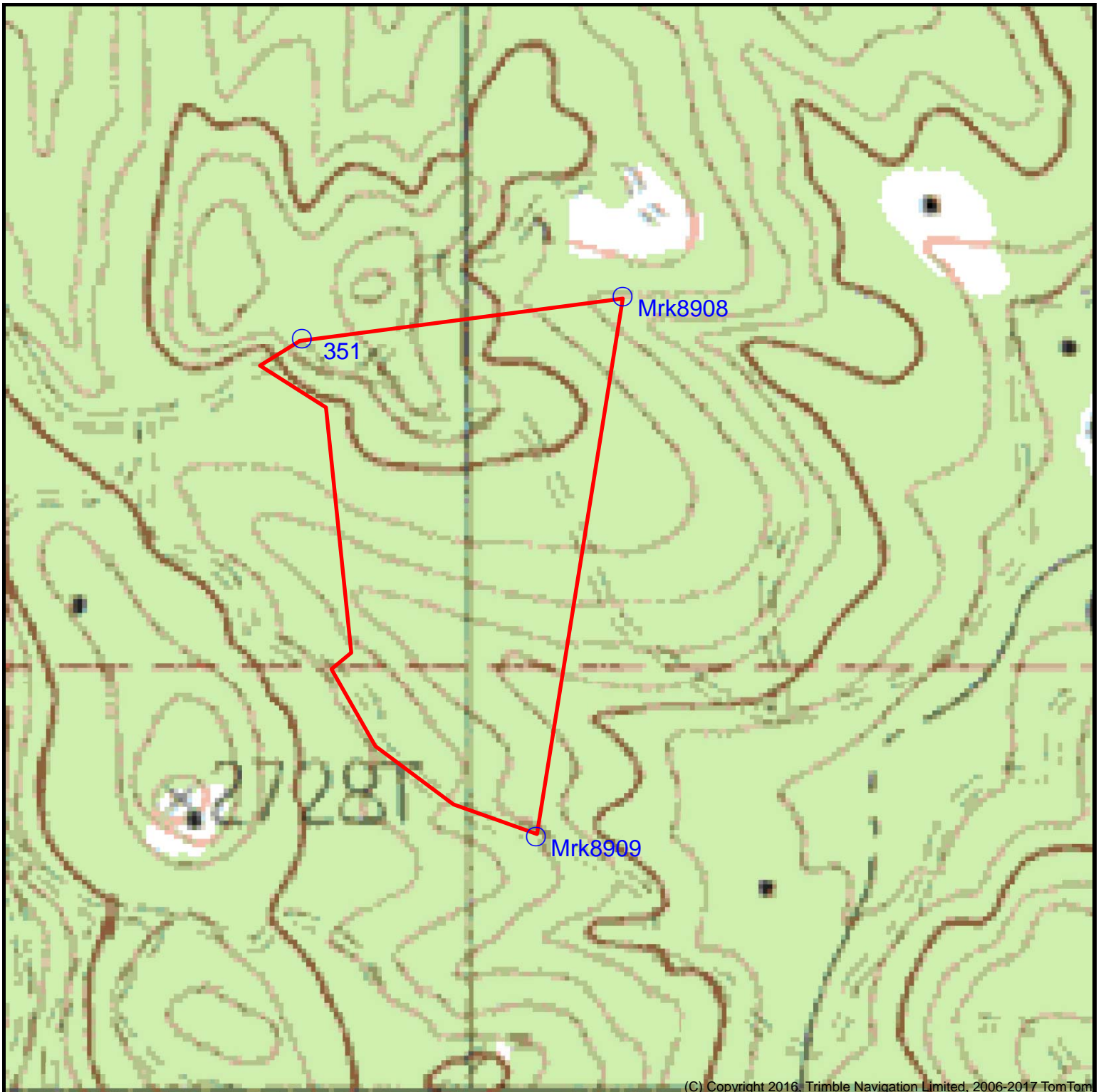
(C) Copyright 2017, Mapbox, 2006-2017 TomTom

DISCLAIMER: The information contained herein is as obtained by this broker from sellers, owners, or other sources. This information is considered reliable, neither this broker nor owners make any guarantee, warranty or representation as to correctness of any data or descriptions and the accuracy of such statements. The correctness and / or accuracy of any and all statements should be determined through independent investigation made by the prospective purchaser. Any offer for sale is subject to prior sale, errors and omissions, change of price, terms or other conditions or withdrawal from sale in whole or in part, by seller without notice and at the sole discretion of seller. Readers are urged to form their own independent conclusions and evaluations in consultation with legal counsel, accountants, and/or investment advisors concerning and all material contained herein.



20.36 acres in IN MENDOCINO COUNTY  
Gorgeous Redwood Forest  
Openings with privacy and seclusion  
Great access and exposure  
TONY SORACE LAND AND RANCH BROKER  
PONDEROSA AND SUN REALTY  
888.555.8888

Tony Sorace  
Land and Ranch Broker  
Office: 707-459-5108  
Cell: 707-489-3763  
tonysorace@pacific.net  
www.pondsun.com



DISCLAIMER: The information contained herein is as obtained by this broker from sellers, owners, or other sources. This information is considered reliable, neither this broker nor owners make any guarantee, warranty or representation as to correctness of any data or descriptions and the accuracy of such statements. The correctness and / or accuracy of any and all statements should be determined through independent investigation made by the prospective purchaser. Any offer for sale is subject to prior sale, errors and omissions, change of price, terms or other conditions or withdrawal from sale in whole or in part, by seller without notice and at the sole discretion of seller. Readers are urged to form their own independent conclusions and evaluations in consultation with legal counsel, accountants, and/or investment advisors concerning and all material contained herein.